

Service
Service
Service



Service Manual

Horizontal Frequency
30-81 kHz

TABLE OF CONTENTS

| Description | Page | Description | Page |
|---------------------------------------|------|---|------|
| Table Of Contents..... | 1 | 5.2.Electrical Block Diagram..... | 17 |
| Revision List..... | 2 | 6.Schematic..... | 19 |
| Important Safety Notice..... | 3 | 6.1Main Board..... | 19 |
| 1. Monitor Specification..... | 4 | 6.2Power Board..... | 24 |
| 2. LCD Monitor Description..... | 5 | 7. PCB Layout..... | 26 |
| 3. Operation Instruction..... | 6 | 7.1. Main Board..... | 26 |
| 3.1 General Instructions..... | 6 | 7.2.Power Board..... | 29 |
| 3.2. Control Button..... | 6 | 7.3.Key Board..... | 30 |
| 3.3 Adjusting the Picture..... | 7 | 8. Maintainability..... | 31 |
| 4. Input/Output Specification..... | 10 | 8.1. Equipments and Tools Requirement..... | 31 |
| 4.1.Input Signal Connector..... | 10 | 8.2. Trouble Shooting..... | 32 |
| 4.2.Factory Preset Display Modes..... | 11 | 9. White-Balance, Luminance adjustment..... | 38 |
| 4.3.Panel Specification..... | 11 | 10. Monitor Exploded View..... | 39 |
| 5. Block Diagram..... | 15 | 11. BOM List..... | 40 |
| 5.1.Software Flow Chart..... | 15 | 12. Different Parts List..... | 63 |

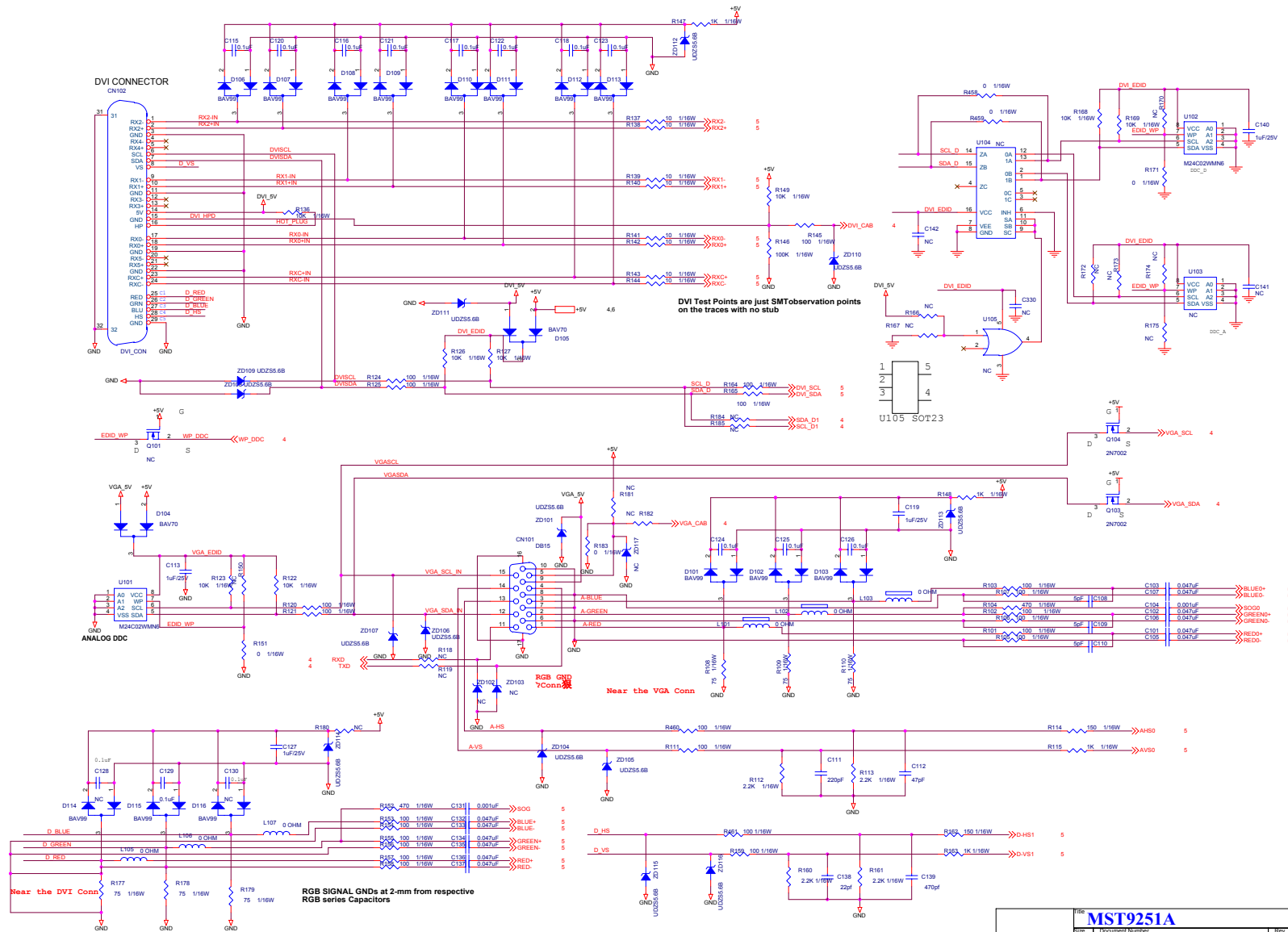
SAFETY NOTICE

ANY PERSON ATTEMPTING TO SERVICE THIS CHASSIS MUST FAMILIARIZE HIMSELF WITH THE CHASSIS AND BE AWARE OF THE NECESSARY SAFETY PRECAUTIONS TO BE USED WHEN SERVICING ELECTRONIC EQUIPMENT CONTAINING HIGH VOLTAGES.

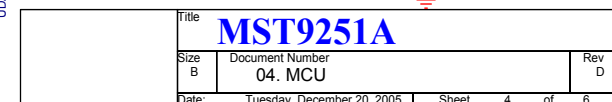
CAUTION: USE A SEPARATE ISOLATION TRANSFORMER FOR THIS UNIT WHEN SERVICING

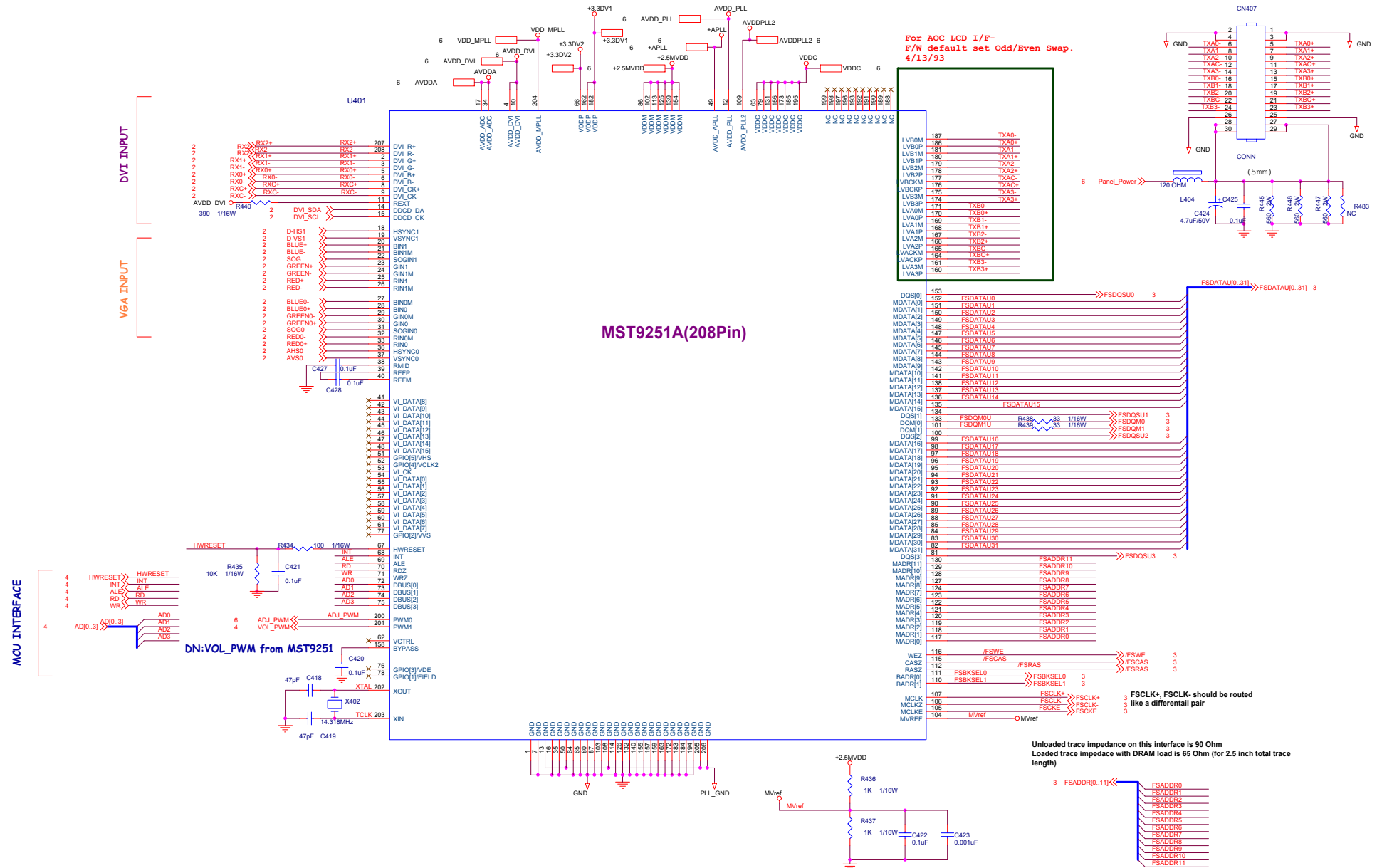
6. Schematic

6.1 Main Board

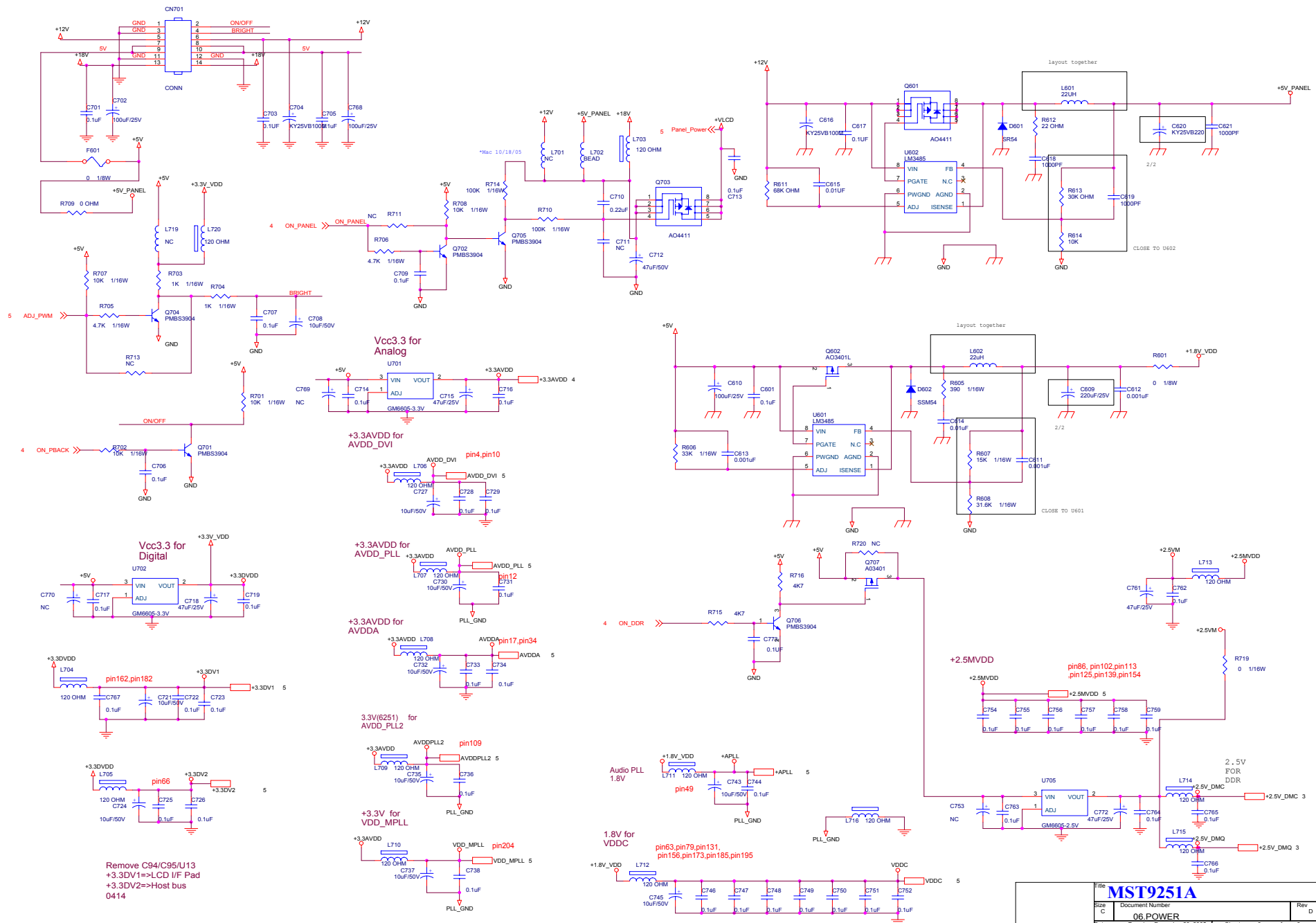








| | | | |
|--|-------------|-----------------|-----|
| | Title | | |
| | 05. MST9251 | | |
| | Size | Document Number | Rev |
| | C | MST9251A | D |



| | | |
|---------------------------------|----------------------------|--------------|
| <Title> | | |
| INTERNAL POWER FOR PWTV2066FJB1 | | |
| Size B | Document Number | Rev 2 |
| Date: | Thursday, October 13, 2005 | Sheet 1 of 3 |

